



KITO MF SERIES MOTORIZED TROLLEY MODEL MF2C

PARTS LIST

IMPORTANT

When ordering replacement parts, please specify the following points:

1. Trolley capacity.
2. Model number in name plate.
3. Correct part names and numbers.
4. Lineal length of push button cord or power supply cable.
5. Travelling speed.

A HOUSING AND MOTOR PARTS

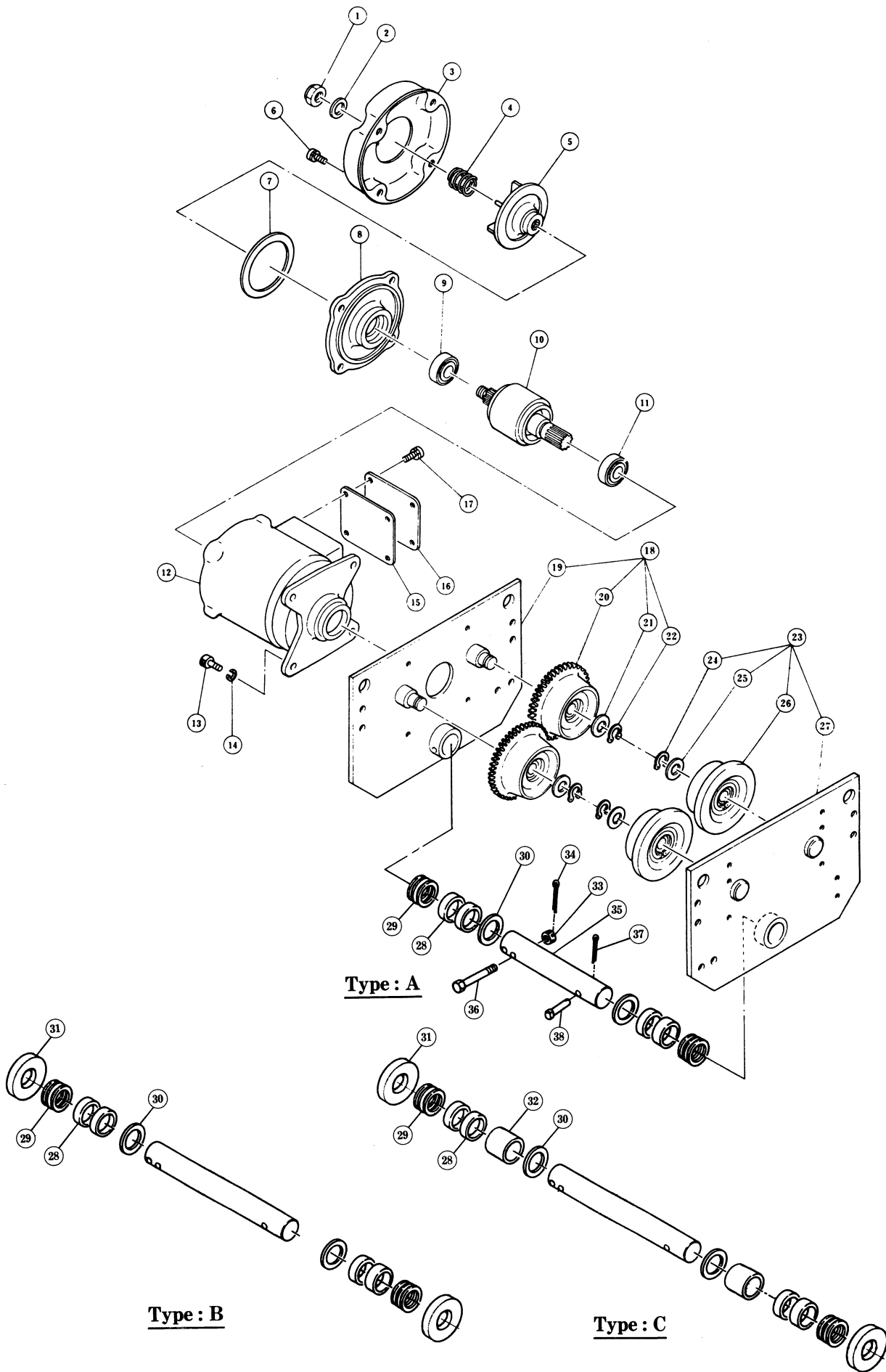


Fig No.	Part No.	Part Name	Nos per Trolley	Capacity		
				½ t	1 t	2 t
1	M6F259	Nut	1	1 a		
2	M6F306	Washer	1	2 a		
3	M6F308	Brake cover	1	3 a		
4	M6F304	Brake spring	1	4 a		
5	M6F302	Brake drum	1	5 a		
6	M6F321	Machine screw with spring washer	4	6 a		
7	M6F303	Friction plate	1	7 a		
8	M6F205	Motor cover	1	8 a		
9	M6F271	Ball bearing	1	9 a		
10	M6F5502	Motor shaft with rotor	1	10a		10b
11	M6F272	Ball bearing	1	11a		
12	M6F5501	Motor frame with stator	1	12a		12b
13	M6F251	Socket bolt	4	13a		
14	M6F155	Spring washer	4	14a		
15	M6F207	Terminal cover packing	1	15a		
16	M6F206	Terminal cover	1	16a		
17	E6F151	Machine screw with spring washer	4	17a		
18	M6F1111	Side plate G complete set	1	18a	18b	18c
19	M6F5111	Side plate G assembly	1	19a	19b	19c
20	M6F1101	Track wheel G assembly	2	20a	20b	20c
21	M6F104	Washer	2	21a		21b
22	M6F153	Snap ring	2	22a		22b
23	M6F1112	Side plate S complete set	1	23a	23b	23c
24	M6F153	Snap ring	2	22a		22b
25	M6F104	Washer	2	21a		21b
26	M6F1102	Track wheel P assembly	2	26a	26b	26c
27	M6F5112	Side plate S assembly	1	27a	27b	27c

				Capacity								
				½ t			1 t			2 t		
Beam width (mm)				58 to 127	128* to 203	204* to 305	58 to 127	128* to 153	154* to 305	100 to 153	154* to 178	179 to 305
Type				A	C	C	A	B	C	A	B	B
Fig No.	Part No.	Part Name	Nos per Trolley									
28	M6F116	Thick spacer	3							28c		
			4	28a			28b					
			5	28a								
			7	28a								
			11				28b					
			13									28c
29	M6F117	Thin spacer	8	29a			29b			29c		
			10	29a			29b					
30	M6F119	Thin spacer L	2	30a			30b			30c		
31	M6F137	Balancing collar	2	31a			31b			31c		
32	M6F138	Fixing spacer	2	32a			32b					
33	M6F162	Slotted nut	1	33a			33b					
34	M6F163	Split pin	1	34a			34b					
35	M6F115	Suspension shaft	1	35a			35b			35c		
	M6F136			35a								
	M6F181			35a			35b			35c		
36	M6F161	Bolt	1	36a			36b			36c		
37	M6F165	Sprit pin	1	37a			37b					
38	M6F164	Shaft stopper pin	1	38a			38b			38c		

Note:1) Letters A, B and C mean the spacer arrangement type shown in page 1.

2) Range in * asterisk show the optional range.

3) 128 to 153mm in 1t and 154 to 178mm in 2t is available as option by using standard length suspension shaft and adding extra spacers.

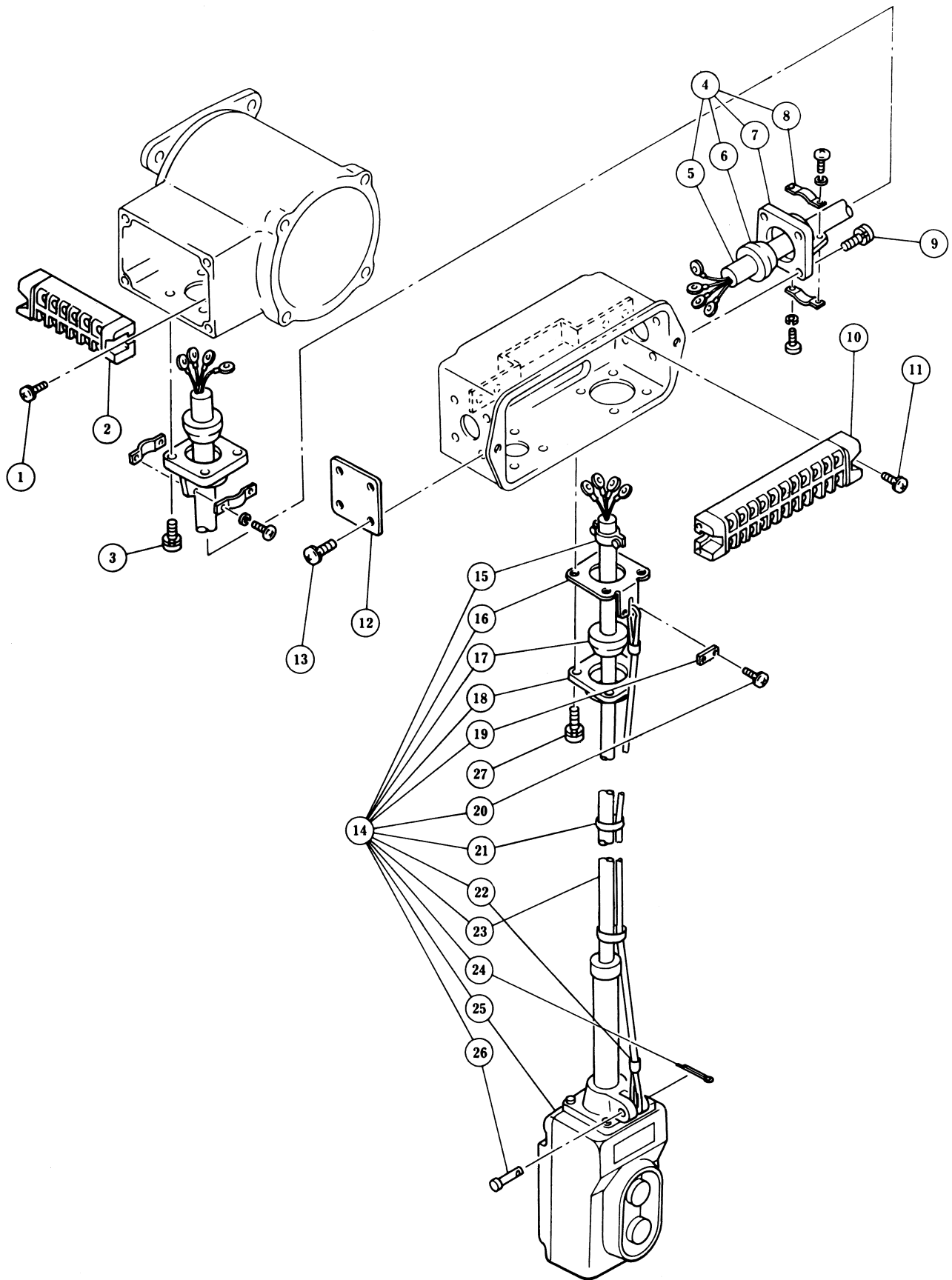


Fig No.	Part No.	Part Name	Nos per Trolley	Capacity		
				½ T	1 T	2 T
1	E6F652	Machine screw with spring washer	4	1 a		
2	M6F518	Terminal plate 6P	1	2 a		
3	E6F551	Machine screw with spring washer	4	3 a		
4	M6F1521	Cable 4C complete set	1	4 a		
5	M6F521	Cable 4C	1	5 a		
6	M6F523	Cable packing 14	2	6 a		
7	E6FL538	Cable holder M	2	7 a		
8	M6F1524	Cable clamp 14 assembly	2	8 a		
9	M6F554	Machine screw with spring washer	4	9 a		
10	E6FL604	Terminal plate 11P	1	10a		
11	E6F652	Machine screw with spring washer	2	1 a		
12	E6F525	Lid	1	12a		
13	E6FL552	Machine screw with spring washer	4	13a		
14	M6F1531	2 Push button cord complete set	1	14a		
15	E6F1524	Cable clamp 14 assembly	1	15a		
16	M6F529	Cord holder support 42	1	16a		
17	E6F523	Packing 14	1	17a		
18	E6F522	Cable holder 42	1	18a		
19	M6F530	Cord chain stopper	1	19a		
20	E6F151	Machine screw with spring washer	2	P 2-17a		
21	E3S637	Lock-belt	2	21a		
22	E3S638	Fixing sleeve	2	22a		
23	M6F531	Push button cord 4C	1	23a		
24	E6F671	Split pin	1	24a		
25	M6F1533	2 Push button switch assembly	1	25a		
26	E6F628	Cord chain pin	1	26a		
27	E6F551	Machine screw with spring washer	4	3 a		

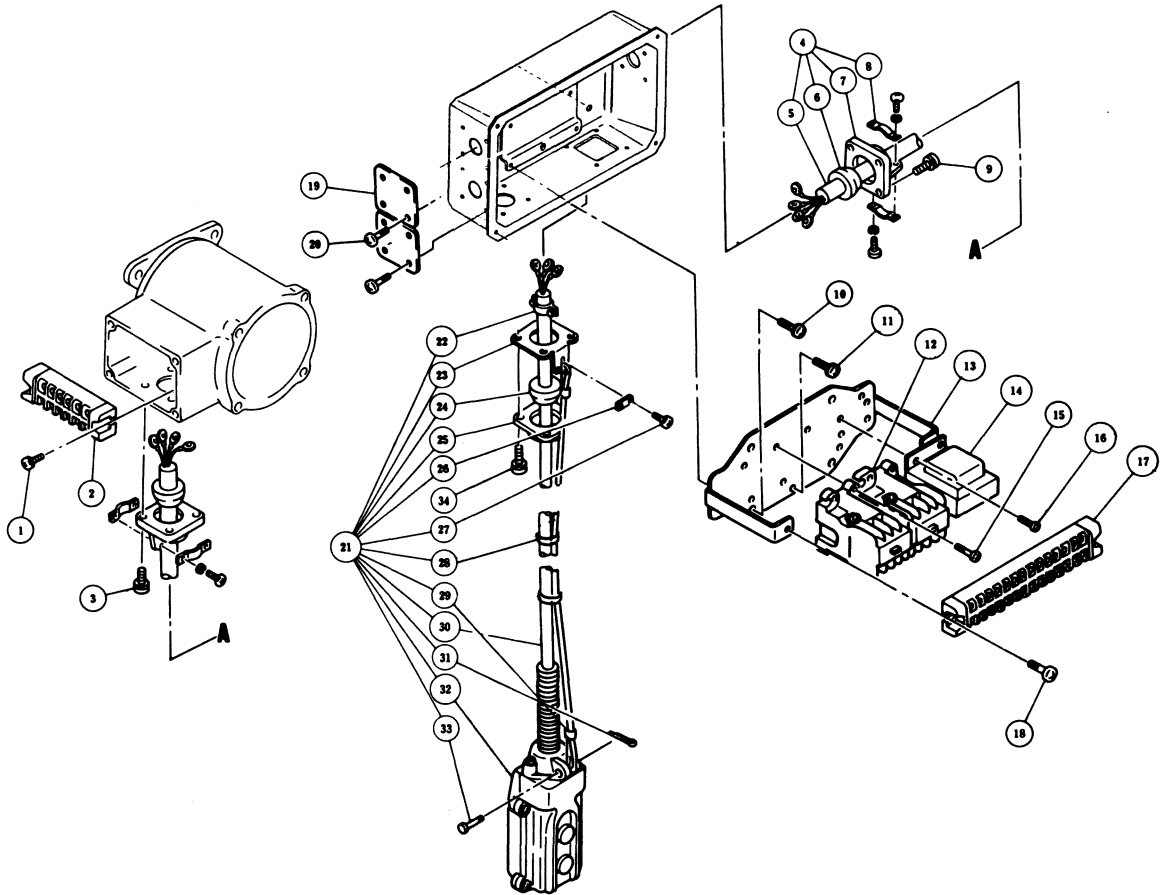


Fig No.	Part No.	Part Name	Nos per Trolley	Capacity		
				1/2T	1T	2T
10	E6F151	Machine screw with spring washer	4	P 2 - 17a		
11	MS555	Machine screw with spring washer	1	11a		
12	ES617	Electromagnetic contactor	2	12a		
13	M7S5514	Plate assembly	1	13a		
14	MS546	Transformer	1	14a		
15	E6F652	Machine screw with spring washer	4	P 4 - 1 a		
16	E6FL663	Machine screw with spring washer	4	16a		
17	MS519	Terminal plate 14P	1	17a		
18	E6F652	Machine screw with spring washer	2	P 4 - 1 a		
19	E6F525	Lid	2	P 4 - 12a		
20	E6F1524	Machine screw with spring washer	8	P 4 - 13a		
21	M6FL1531	2 Push button cord complete set	1	21a		
22	E6FL1612	Cable clamp 14 assembly	1	P 4 - 15a		
23	M6F529	Cord holder support 42	1	P 4 - 16a		
24	E6F523	Packing 12	1	24a		
25	E6F522	Cable holder 42	1	P 4 - 18a		
26	M6F530	Cord chain stopper	1	P 4 - 19a		
27	E6F151	Machine screw with spring washer	2	P 2 - 17a		
28	E3S637	Lock-belt	2	P 4 - 21a		
29	E3S638	Fixing sleeve	2	P 4 - 22a		
30	M6FL531	Push button cord 3C	1	30a		
31	E6F671	Split pin	1	31a		
32	MS1531	2 Push button switch assembly	1	32a		
33	E6F638	Cord chain pin	1	P 4 - 26a		
34	E6F551	Machine screw with spring washer	4	P 4 - 3 a		

*Each Fig No.1-9 is referred to P4

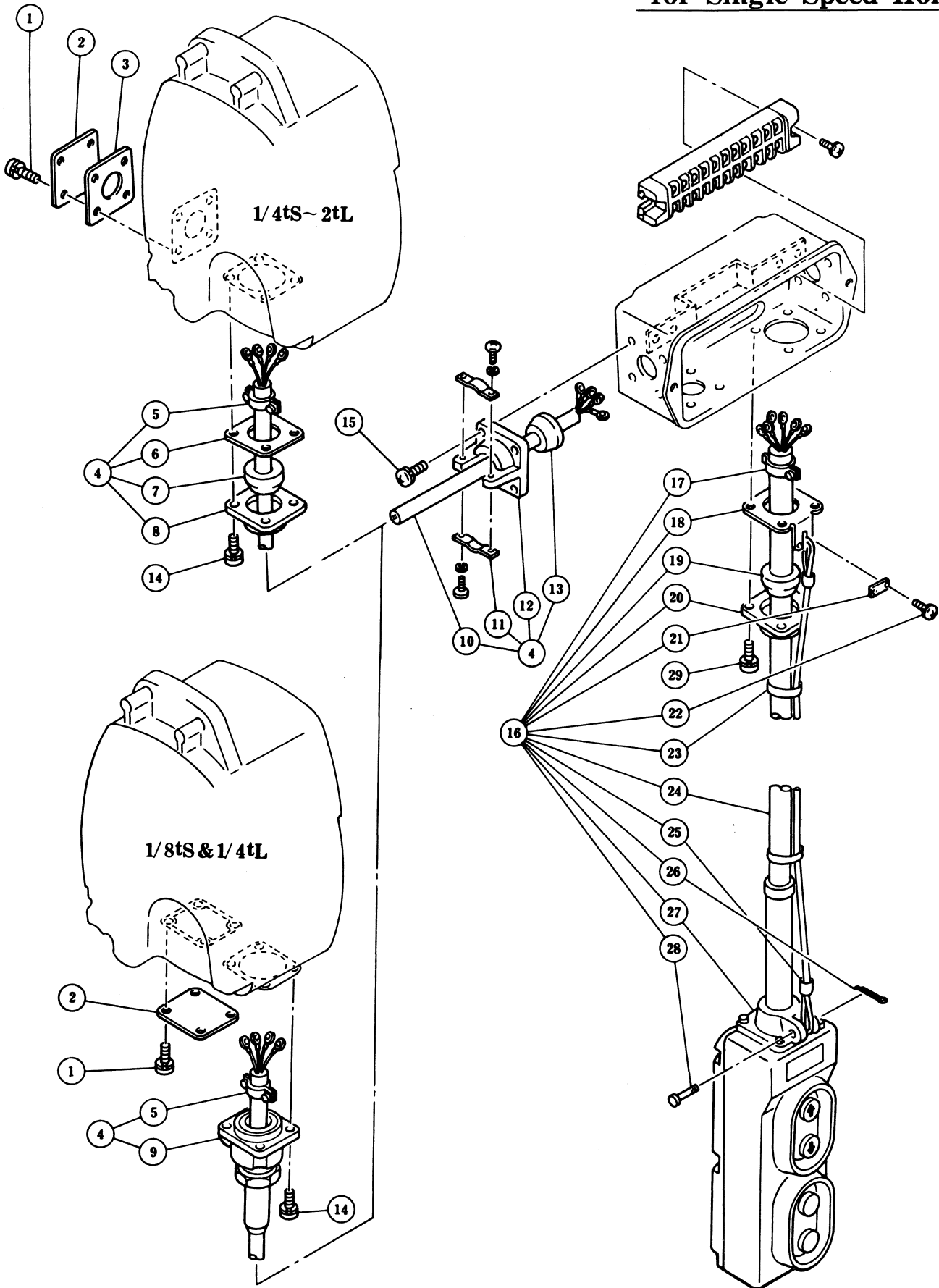


Fig No.	Part No.	Part Name	Nos per Trolley	Capacity		
				½ T	1 T	2 T
* 1	M6F554	Machine screw with spring washer	4	P 4 - 9 a		
	E6F551	Machine screw with spring washer	4	P 4 - 3 a		
2	E6F525	Lid for EF ⅛'S & ¼'L	1	P 4 -12a		
	E6F630	Lid for EF ¼'S & OVER	1	2 a		
3	E6F536	Plate packing	1	3 a		
4	M6F1601S	Cable 4C complete set	1	4 a		
5	E6FL1612	Cable clamp 14 assembly	1	P 4 -15a		
6	E6F537	Holder plate 42	1	6 a		
7	E6F523	Packing 14	1	P 4 -17a		
8	E6F522	Cable holder 42	1	P 4 -18a		
9	E6F1704	Cord holder A assembly	1	9 a		
10	M6F601S	Cable 4C	1	10a		
11	M6F1524	Cable clamp 14 assembly	1	P 4 - 8 a		
12	E6FL538	Cable holder M	1	P 4 - 7 a		
13	M6F523	Cable packing 14	1	P 4 - 6 a		
14	E6F551	Machine screw with spring washer	4	P 4 - 3 a		
15	M6F554	Machine screw with spring washer	4	P 4 - 9 a		
16	EFM1531S	4 Push button cord complete set	1	16a		
17	E6F1612	Cable clamp 16 assembly	1	17a		
18	M6F529	Cord holder support 42	1	P 4 -16a		
19	E6F611	Packing 15	1	19a		
20	E6F522	Cable holder 42	1	P 4 -18a		
21	M6F530	Cord chain stopper	1	P 4 -19a		
22	E6F151	Machine screw with spring washer	2	P 2 -17a		
23	E3S637	Lock-belt	2	P 4 -21a		
24	EFM531S	Push button cord 6C	1	24a		
25	E3S638	Fixing sleeve	2	P 4 -22a		
26	E6F671	Split pin	1	P 4 -24a		
27	EFM1533S	4 Push button switch assembly	1	27a		
28	E6F628	Cord chain pin	1	P 4 -26a		
29	E6F551	Machine screw with spring washer	4	P 4 - 3 a		

* 1 M6F-554 for EF ⅛'S & ¼'L
E6F-551 for EF ¼'S & OVER

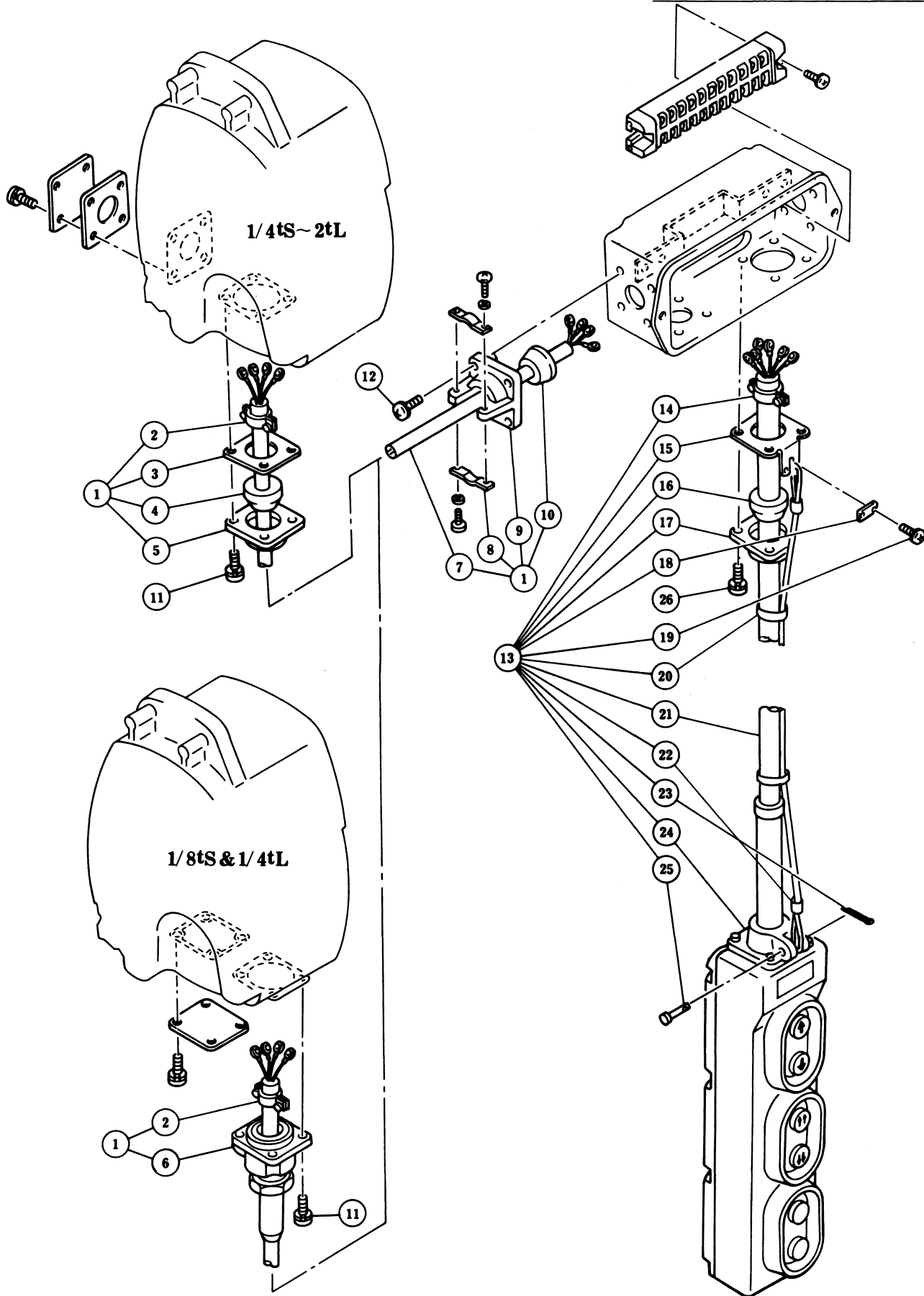


Fig No.	Part No.	Part Name	Nos per Trolley	Capacity		
				½ T	1 T	2 T
1	M6F1601D	Cable 6C complete set	1	1 a		
2	M6F1535	Cable clamp 19 assembly	1	2 a		
3	E6F537	Holder plate 42	1	P 7 - 6 a		
4	E6F611	Packing 18	1	P 7 -19a		
5	E6F522	Cable holder 42	1	P 4 -18a		
6	E6FL1610	Cord holder A assembly	1	6 a		
7	M6F601D	Cable 6C	1	7 a		
8	E6FL1540	Cable clamp 18 assembly	1	8 a		
9	E6FL538	Cable holder M	1	P 4 - 7 a		
10	E6FL539	Cable packing 18	1	10a		
11	E6F551	Machine screw with spring washer	4	P 4 - 3 a		
12	M6F554	Machine screw with spring washer	4	P 4 - 9 a		
13	EFM1531D	6 Push button cord complete set	1	13a		
14	E6F1612	Cable clamp 18 assembly	1	14a		
15	M6F529	Cord holder support 42	1	P 4 -16a		
16	E6F611	Packing 18	1	16a		
17	E6F522	Cable holder 42	1	P 4 -18a		
18	M6F530	Cord chain stopper	1	P 4 -19a		
19	E6F151	Machine screw with spring washer	2	P 2 -17 a		
20	E3S637	Lock-belt	2	P 4 -21a		
21	M6F531D	Push button cord 8C	1	21a		
22	E3S638	Fixing sleeve	2	P 4 -22a		
23	E6F671	Split pin	1	P 4 -24a		
24	EFM1533D	6 Push button switch assembly	1	24a		
25	E6F638	Cord chain pin	1	P 4 -26a		
26	E6F551	Machine screw with spring washer	4	P 4 - 3 a		

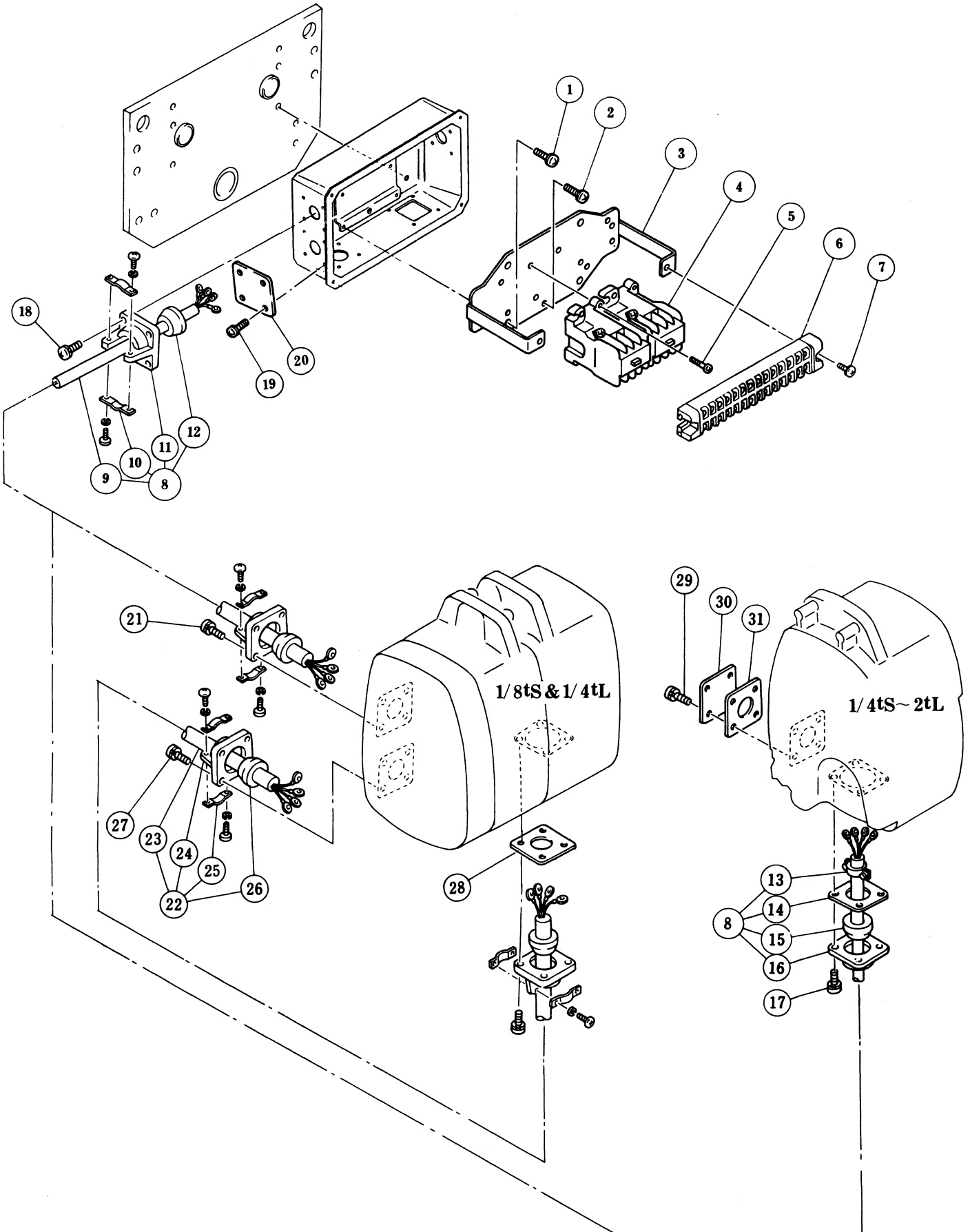
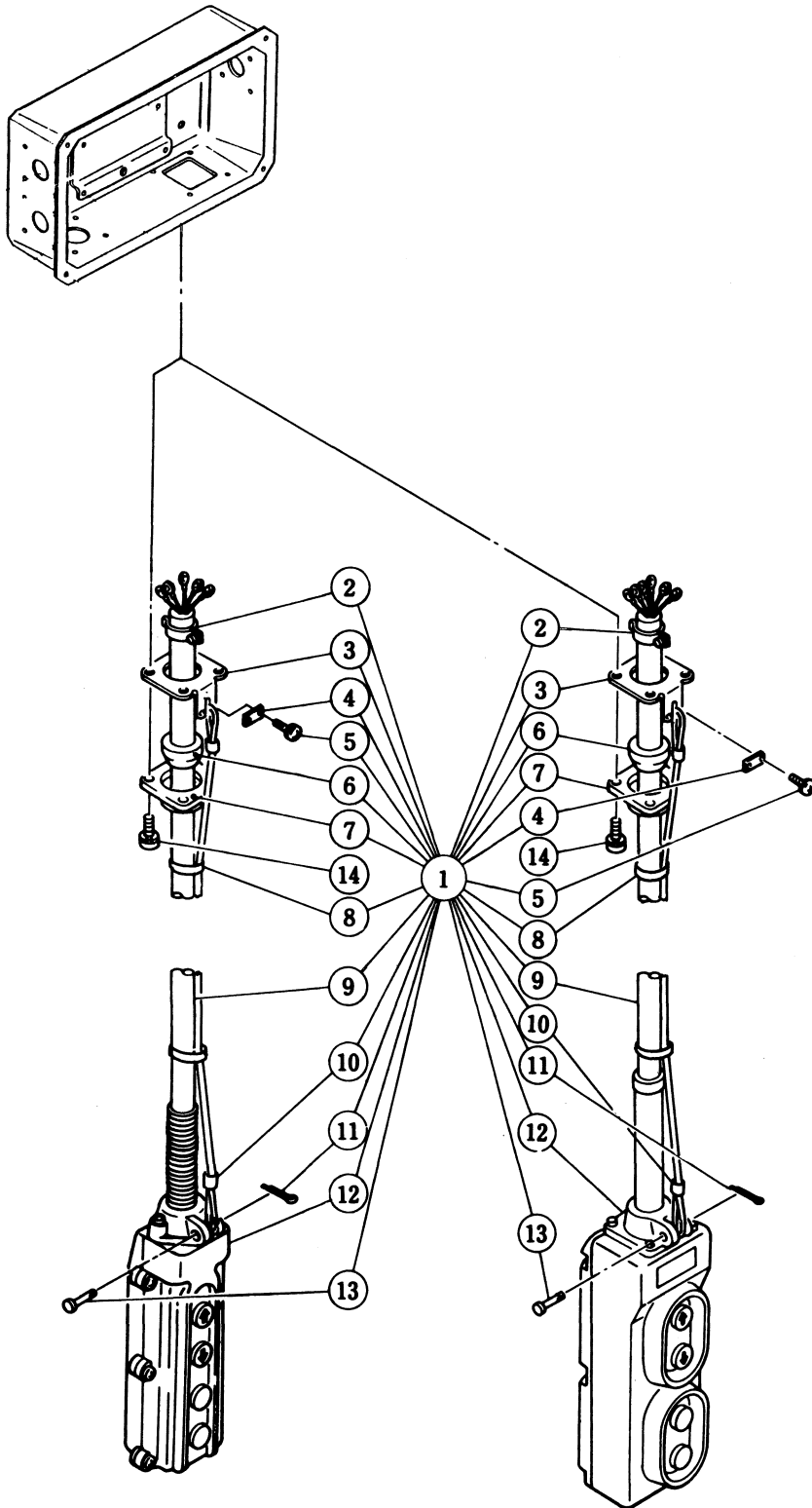


Fig No.	Part No.	Part Name	Nos per Trolley	Capacity		
				½T	1T	2T
1	E6F151	Machine screw with spring washer	4	P 2-17a		
2	M6FL555	Machine screw with spring washer	1	P 5-11a		
3	MS5514	Plate assembly	1	P 5-13a		
4	ES617	Electromagnetic contotor	2	P 5-12a		
5	E6F652	Machine screw with spring washer	4	P 4-1a		
6	MS519	Terminal plate 14P	1	P 5-17a		
7	E6F652	Machine screw with spring washer	2	P 4-1a		
8	M6FL1601	Cable 8C complete set	S	1	8 a	
		Cable 9C complete set	D		8 b	
9	M6FL601	Cable 8C	S	1	9 a	
		Cable 9C	D		9 b	
10	E6FL1540	Cable clamp 18 assembly	S	1	10a	
		Cable clamp 21 assembly	D		10b	
11	E6FL538	Cable holder M	2	P 4-7a		
12	E6FL539	Cable packing 18	2	12a		
		Cable packing 21	2	12b		
13	M6F1535	Cable clamp 19 assembly	S	1	13a	
	M6FL1608	Cable clamp 21 assembly	D		13b	
14	E6F537	Holder plate 42	1	P 7-6a		
15	E6F611	Packing 18	S	1	15a	
	M6FL607	Packing 21	D		15b	
16	E6F522	Cable holder 42	1	P 4-18a		
17	E6F551	Machine screw with spring washer	4	P 4-3a		
18	M6F554	Machine screw with spring washer	4	P 4-9a		
19	E6F151	Machine screw with spring washer	4	P 2-17a		
20	E6F525	Lid	1	P 4-12a		
21	E6F551	Machine screw with spring washer	4	P 4-3a		
22	M6FL1630	Cable 4C complete set	S	1	22a	
		Cable 6C complete set	D		22b	
23	M6FL630	Cable 4C	S	1	23a	
		Cable 6C	D		23b	
24	E6FL538	Cable holder M	2	P 4-7a		
25	M6F1524	Cable clamp 14 assembly	S	2	P 4-8a	
	E6FL1540	Cable clamp 18 assembly	D		10a	
26	M6F523	Cable packing 14	S	2	P 4-6a	
	E6FL539	Cable packing 18	D		12a	
27	E6F551	Machine screw with spring washer	8	P 4-3a		
28	E6F541	Holder plate B	1	28a		
29	E6F551	Machine screw with spring washer	4	P 4-3a		
30	E6F630	Lid	1	P 7-2a		
31	E6F536	Plate packing	1	P 7-3a		



SINGLE SPEED HOISTS

DUAL SPEED HOISTS

Fig No.	Part No.	Part Name	Nos Per Trolley		Capacity		
					½T	1T	1T
1	EFML1532S	4 Push button cord complete set	S	1	1 a		
	EFML1532D		D		1 b		
2	E6F1612	Cable clamp 14 assembly	S	1	P 4-15 a		
		Cable clamp 16 assembly	D		P 7-17 a		
3	M6F529	Cord holder support 42	1		P 4-16 a		
4	M6F530	Cord chain stopper	1		P 4-19 a		
5	E6F151	Machine screw with spring washer	2		P 2-17 a		
6	E6F611	Packing 14	S	1	P 4-17 a		
		Packing 15	D		P 7-19 a		
7	E6F522	Cord holder 42	1		P 4-18 a		
8	E3S637	Lock-belt	2		P 4-21 a		
9	EFML532S	Push button cord 5C	S	1	9 a		
	EFML532D	Push button cord 6C	D		9 b		
10	E3S638	Fixing sleeve	2		P 4-22 a		
11	E6F671	Split Pin	1		P 4-24 a		
12	MS1531S	4 Push button switch assembly	S	1	12 a		
	MS1531D		D		12 b		
13	E6F638	Cord chain pin	1		P 4-26 a		
14	E6F551	Machine screw with spring washer	4		P 4-3 a		

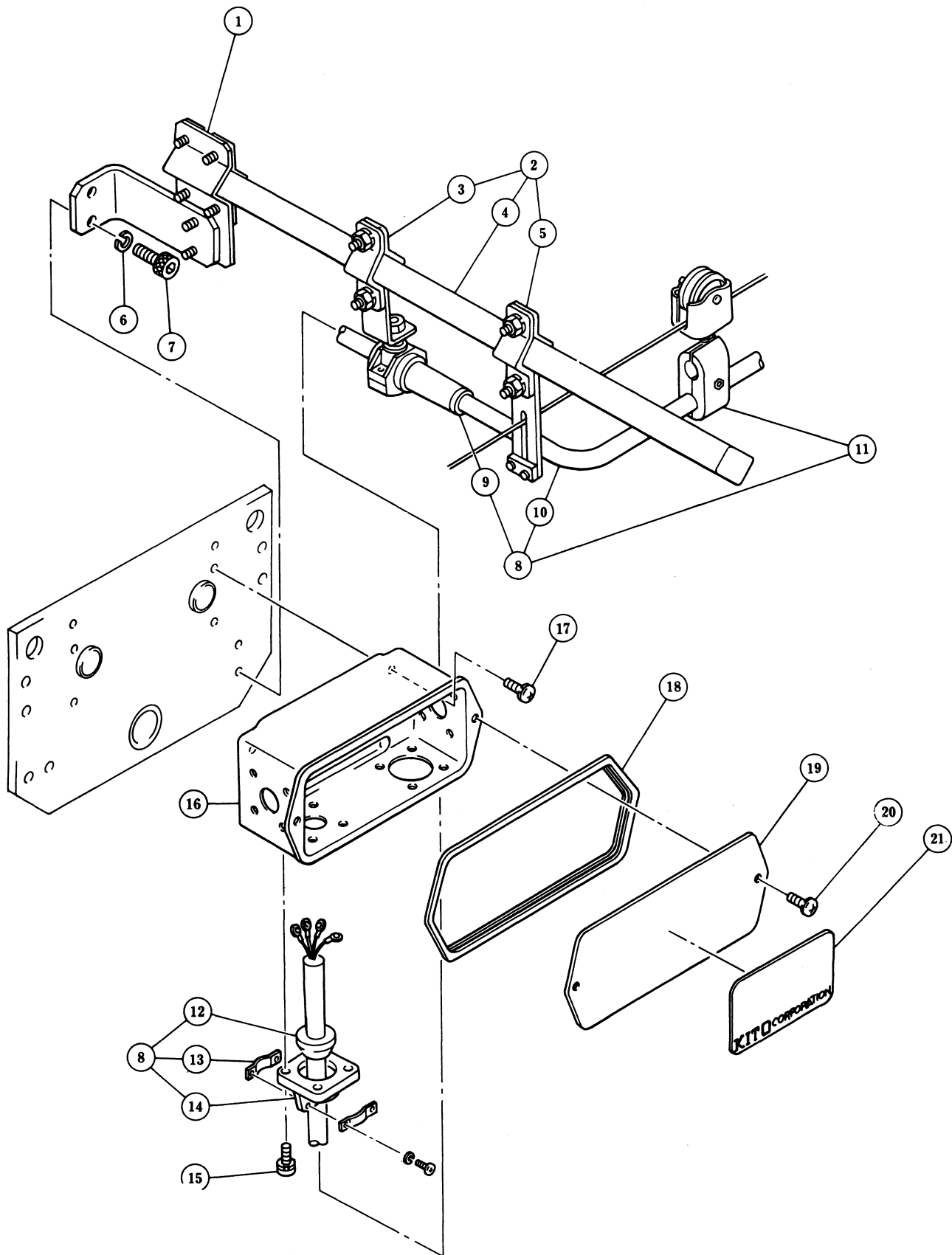


Fig No.	Part No.	Part Name	Nos per Trolley	Capacity		
				½ ^T	1 ^T	2 ^T
1	M6F1542	Bar Holder Assembly	1	1 a		
2	M6F1721	Cable Support Bar Complete Set	1	2 a		
3	M6F 1723	Cable Support Arm Assembly	1	3 a		
4	M6F 721	Cable Support Bar	1	4 a		
5	M6F 1727	Wire Guide Assembly	1	5 a		
6	M6F 576	Spring Washer	2	6 a		
7	M6F 575	Socket Bolt	2	7 a		
8	M6F 1731	Power Supply Cable 4C Complete Set	1	8 a		
9	M6F1724	Cable Support Assembly	1	9 a		
10	M6F 731	Power Supply Cable 4C	1	10a		
11	E6FL1527	Cable Hanger Assembly	6	11a		
12	M6F 523	Cable Packing 14	1	P 4—6a		
13	M6F 1524	Cable Clamp 14 Assembly	1	P 4—8a		
14	E6FL 538	Cable Holder M	1	P 4—7a		
15	M6F 779	Machine Screw with Spring Washer	4	15a		
16	M6F 5511	Switch Box Assembly	1	16a		
17	M6F 551	Machine Screw with Spring Washer	4	17a		
18	M6F 513	Switch Box Packing	1	18a		
19	M6F 512	Switch Box Lid	1	19a		
20	E6FL 552	Machine Screw with Spring Washer	2	P 4—13a		
21	M6F 801	Name Plate	1	21a	21b	21c

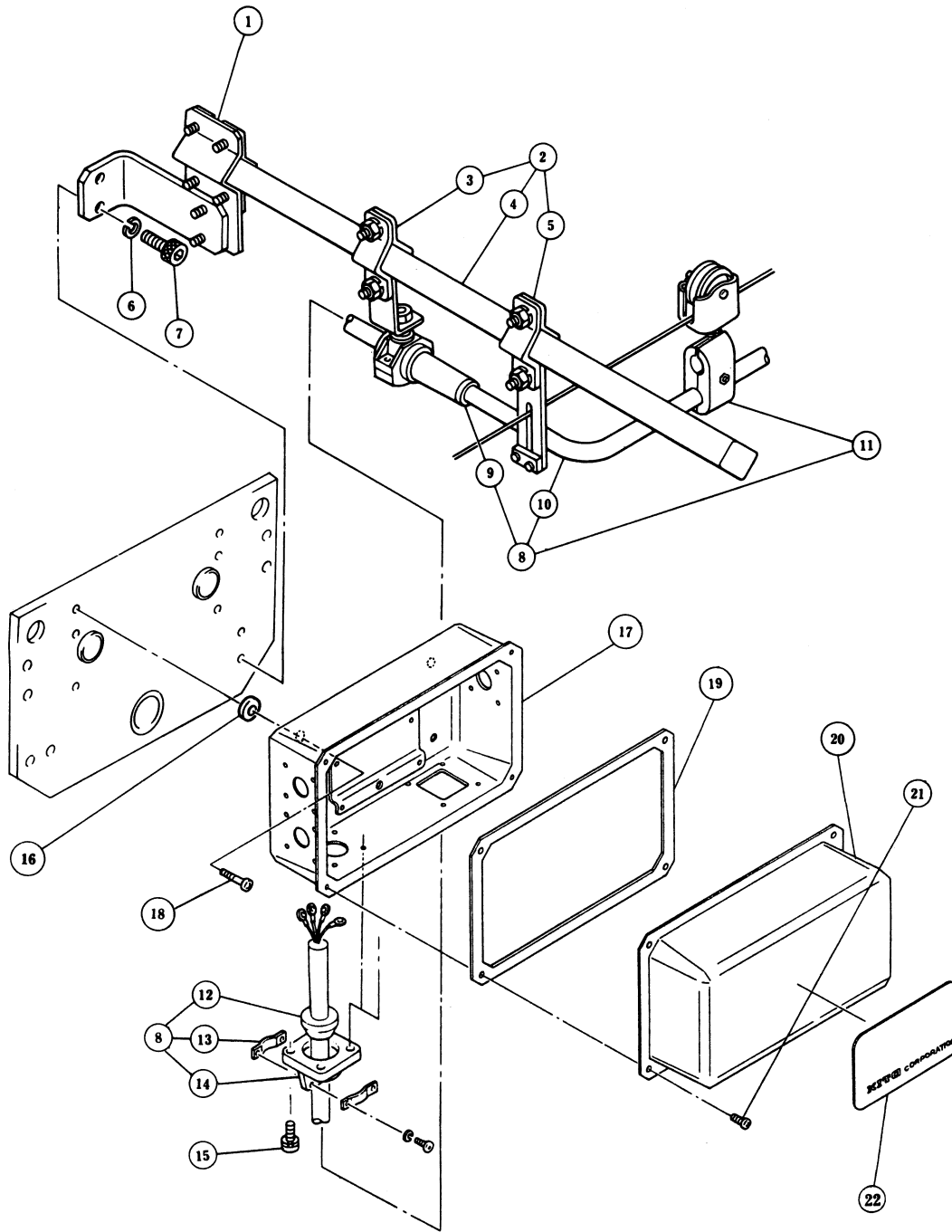


Fig No.	Part No.	Part Name	Nos per Trolley	Capacity		
				1/2 T	1 T	2 T
16	MS517	Spacer	4	14a		
17	MS551	Switch box assembly	1	17a		
18	MS551	Machine screw with spring washer	4	18a		
19	MS513	Switch box packing	1	19a		
20	MS512	Switch box lid	1	20a		
21	E6F151	Machine screw with spring washer	4	P 2 - 17a		
22	M6FL801	Name plate	1	22a	22b	22c

*Each Fig No.1~15 is referred to P15

KITO

URL. <http://www.kito.co.jp>