



EF 2_F SERIES ELECTRIC CHAIN HOIST

PARTS LIST

IMPORTANT

When ordering replacement parts, please specify the following points:

1. Hoist capacity.
2. Model number in name plate.
3. Correct part names and numbers.
4. Lineal length of push button cord, chain lift or power supply cable.

Parts marked in ○ are for 3 phase direct voltage control hoists.

Parts marked in ◎ are only for 3 phase low voltage control hoists.

Other parts marked in ○ mentioned above are common to all type hoists.

Fig No.	Part No.	Part Name	Parts Per Hoist	Capacity							
				$\frac{1}{8}$ -S	$\frac{1}{4}$ -L	$\frac{1}{4}$ -S	$\frac{1}{2}$ -L	$\frac{1}{2}$ -S	1-L	1-S	2-L
1	E6F 162	Socket bolt	4	1 a		1 b		1 c			
2	E6F6107	Motor cover assembly	1	2 a		2 b		2 c		2 d	
* 3	E6F 202	Ball bearing	1	3 a		3 b		3 c		3 d	
4	E6F5212	Brake drum assembly	1	4 a		4 b		4 c		4 d	
5	E6F 214	Brake spring	S	5 a		5 b		5 c		5 d	
			D	5 e		5 f		5 b		5 g	
6	E6F 506	Thrust collar	1	6 a		6 b		6 c			
7	E6F 505	Thrust disc	2	7 a		7 b		7 c			
8	E6F 503	Pull-roter	1	8 a		8 b		8 c			
9	E6F 508	Coned-disc spring	1	9 a		9 b		9 c			
10	E6F5502	Motor shaft with rotor	S	10a		10b		10c		10d	
			D	10e		10f		10g		10h	
11	E6F 221	Oil seal	1	11a		11b		11c			
12	E6F 222	Ball bearing	1	12a				12b		12c	
13	E6F 120	Plug	1					13a			
14	E6F 151	Machine screw with spring washer	4	14a							
15	E6F 122	Bushing	1	15a							
16	E6F 159	Socket bolt	2	16a							
17	E6F 160	Socket bolt	2	17a		17b		17c			
18	E6F 157	Washer	2	18a							
19	E6F5102	Body M with stator	S	19a		19b		19c		19d	
			D	19e		19f		19g		19h	
20	E6F 101	Body G	1	20a		20b		20c		20d	
21	E6F 158	Nut	2	21a		21b		21c			
22	E6F 114	Set pin	2	22a							
23	E6F 109	Gear cover packing	2	23a							
24	E6F 118	Gear case	1	24a							
	E6F 113	Gear cover	1			24b		24c		24d	
25	E6F 108	Plug packing	2	25a							
26	E6F 111	Oil plug	2	26a							
27	E6F 153	Socket bolt	2	27a							
28	E6F 800	Name plate	S	28a	28b	28c	28d	28e	28f	28g	28h
			D	28i	28j	28k	28l	28m	28n	28o	28p
30	E6F 104	Controller cover	*A	30a		30b		30c		30d	
			*B	30a		30e		30f		30g	
31	E6F 107	Controller cover packing	1	31a		31b		31c		31d	
32	E6F 161	Socket bolt	2			32a		32b			
			4							32b	
33	E6F 103	Body plug	1							33a	
*34	E6F 106	Set nut cap	1			34a					
35	E6F 152	Machine screw with spring washer	4			35a					
			6					35a			
36	E6F 235	Oil seal	1	36a				36b			
			4	37a							
37	E6F 155	Spring washer	4							37a	
			5								
38	E6F 156	Socket bolt	4			38a		38b			
			5							38c	
40	E6F 115	Controller cover	*A	40a							
			*B	40b							
41	E6F 165	Socket bolt	4	41a							
42	E6F 525	Lid	2	42a							
43	E6F 151	Machine screw with spring washer	8	14a							
44	E6F 119	Spring pin	1	44a							

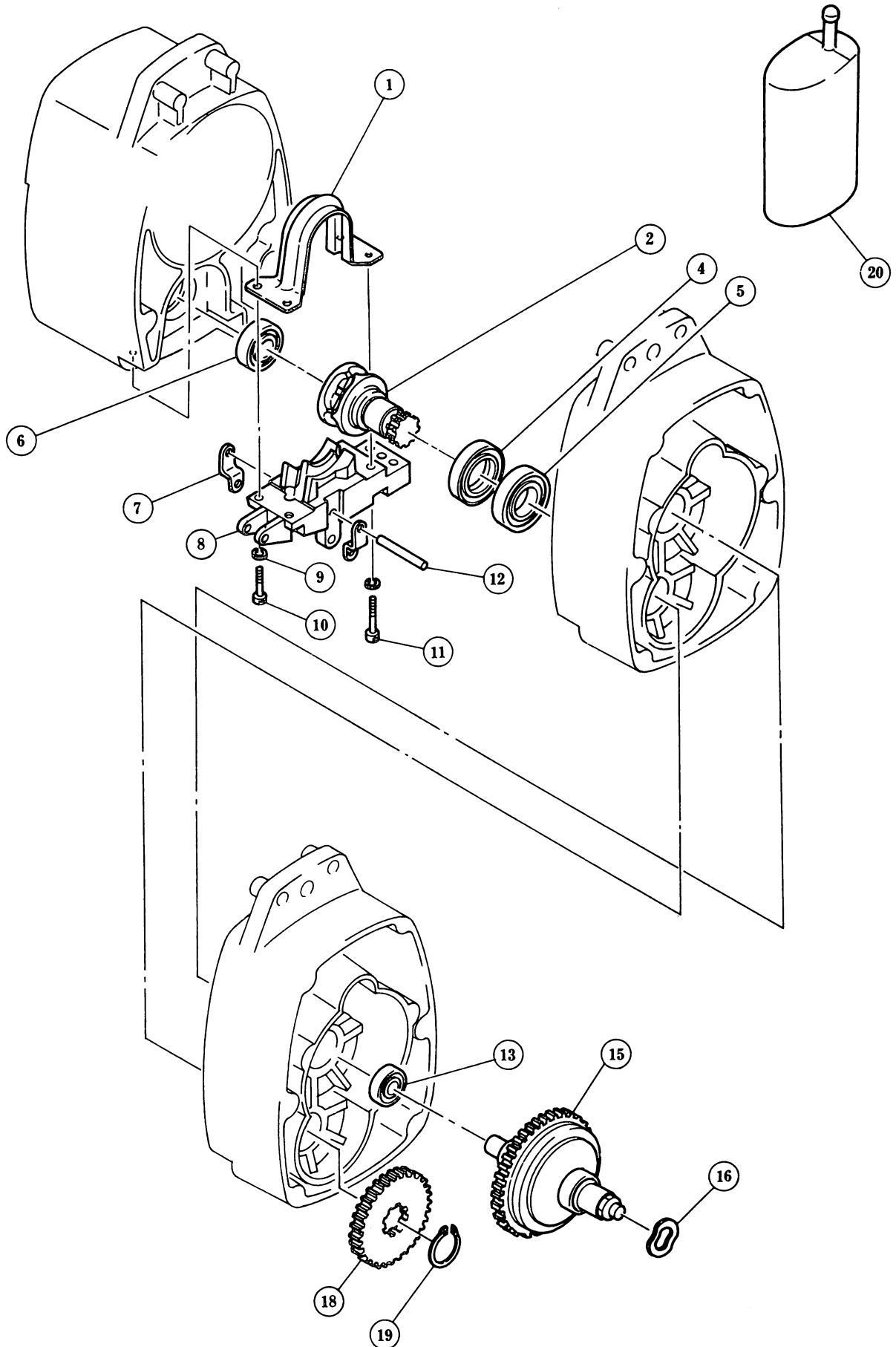
*3 When replacing Ball Bearing, put "Bearing Mount No.85" LOCTIET CORP. or other equivalent chemical glue.

*34 Unnecessary for 3 Phase Low Voltage Control Type.

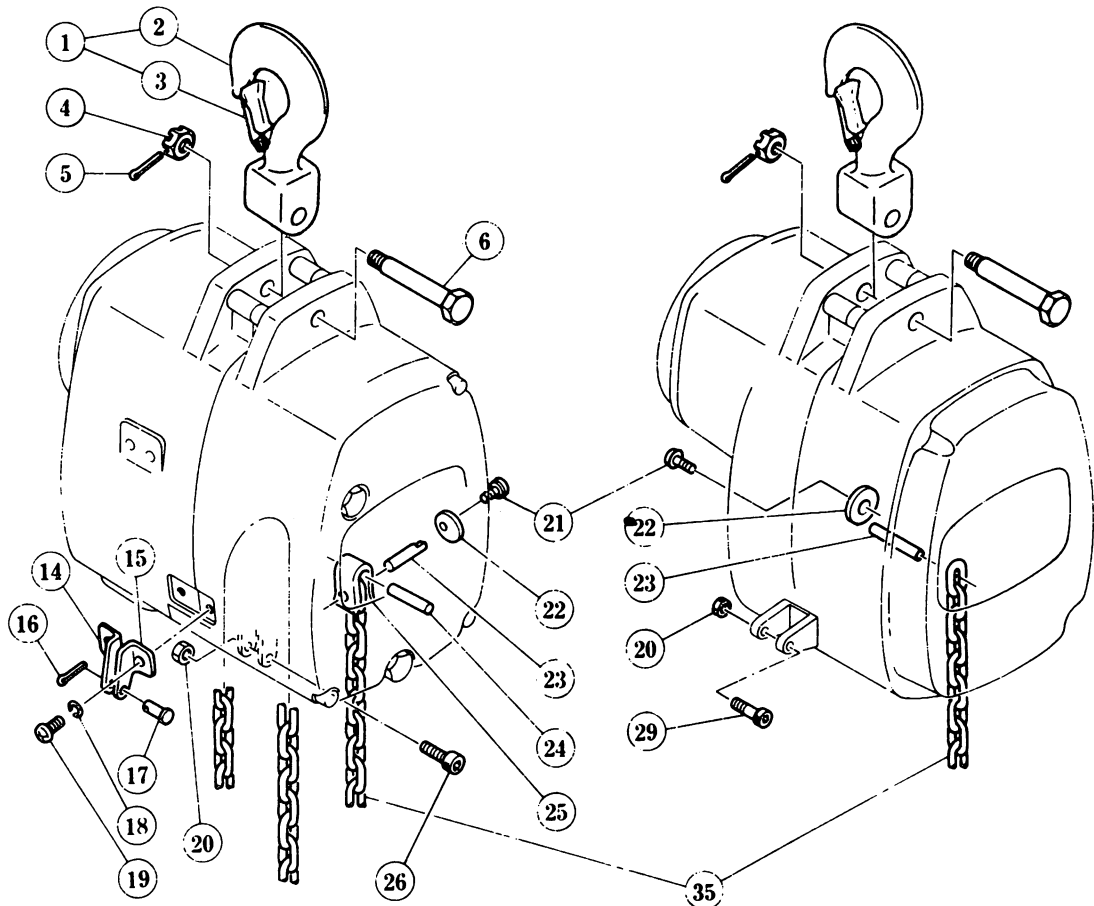
*A for Direct Voltage Control Type.

*B for Low Voltage Control Type.

B GEARING PARTS

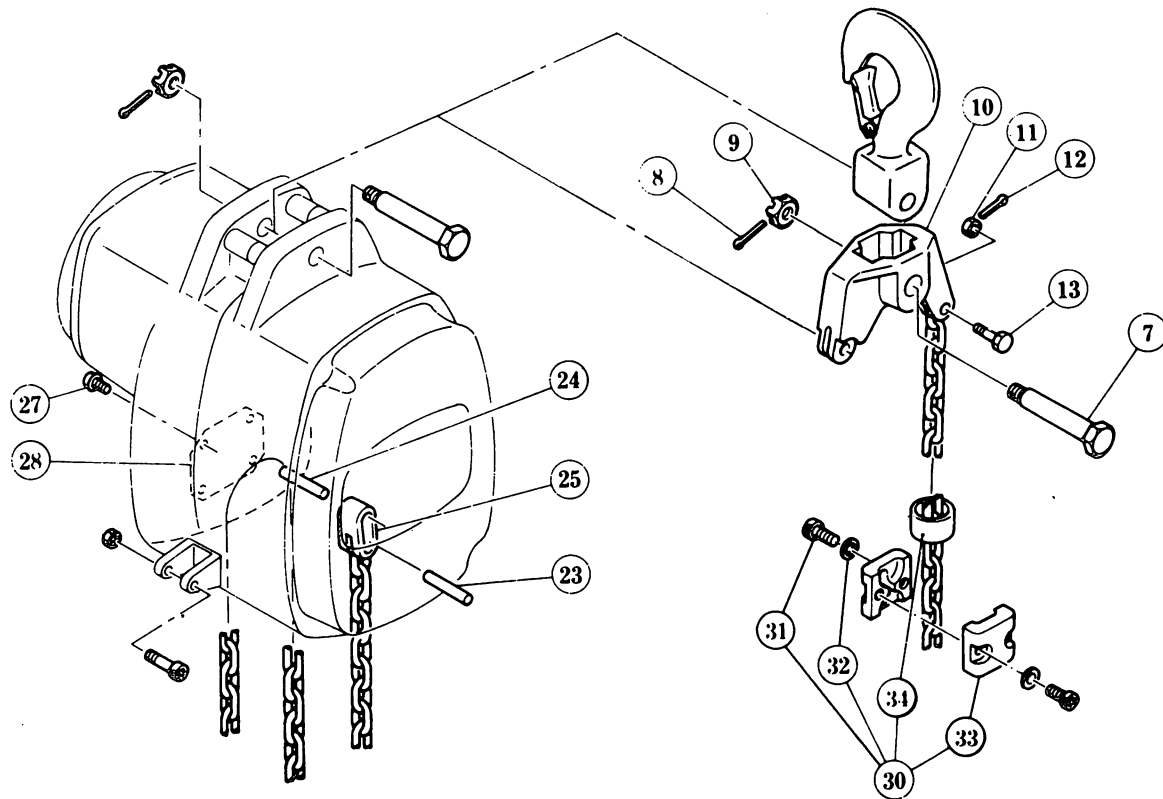


C CHAINING PARTS



$1/8tS$ & $1/4tL$

$1/4tS$ & $1/2tL$

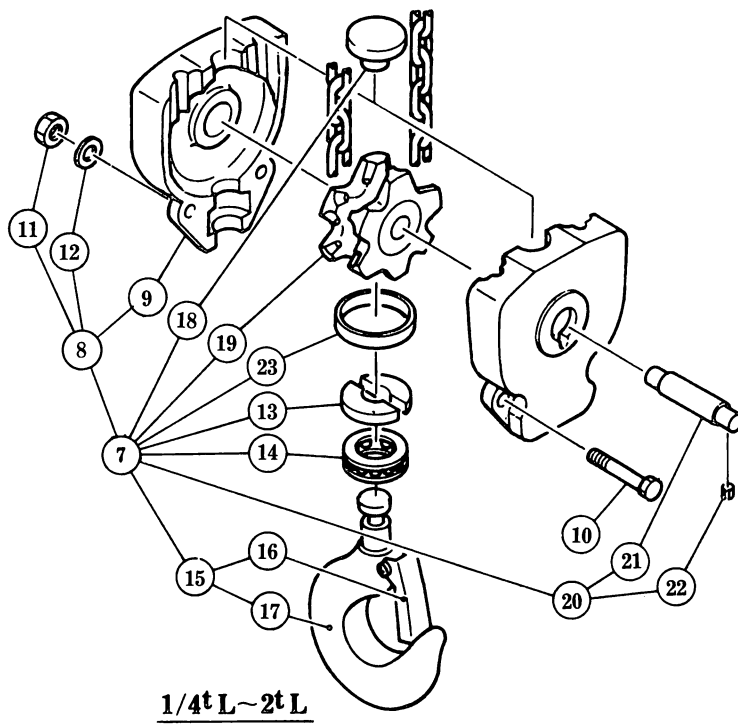
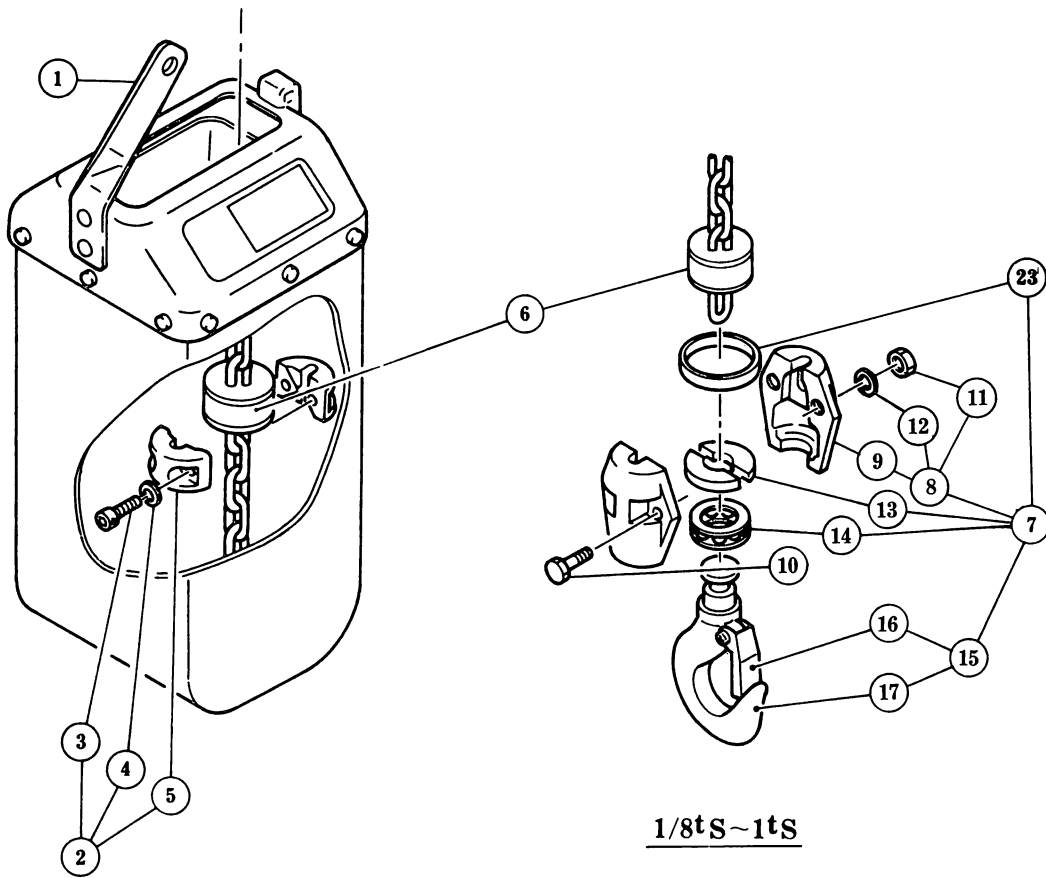


$1/2tS$, $1tL$ & S

$2tL$

Fig No.	Part No.	Part Name	Parts Per Hoist	Capacity						
				1/8-S	1/4-L	1/4-S	1/2-L	1/2-S	1-L	1-S
1	E6F1001	Top hook assembly	1	1 a				1 b		1 c
2	E6F 001	Top hook	1	2 a				2 b		2 c
3	CF 1071	Hook latch assembly	1	3 a				3 b		3 c
4	E6F 166	Slotted nut	1	4 a						
5	E6F 167	Split pin	1	5 a						
6	E6F 117	Top pin	1	6 a				6 b		
7	ES 006	Top pin L	1							7 a
8	E6F 089	Split pin	1							8 a
9	E6F 088	Slotted nut	1							9 a
10	E6F 005	Connection yoke	1							10a
11	M2 049	Slotted nut	1							11a
12	E6F 096	Split pin	1							12a
13	ES 041	Chain pin	1							13a
14	E6F 836	Container hanger L	1	14a						
15	E6F 835	Container hanger R	1	15a						
16	E6F 671	Split pin	1	16a						
17	E6F 833	Hanger pin A	1	17a						
18	E6F 155	Spring washer	2	P2-37a						
19	E6F 856	Machine screw	2	19a						
20	ES 855	U nut	1	20a						
			2			20a				
21	E6F 151	Machine screw with spring washer	1	P2-14a						
22	E6F 127	Stopper plate	1	22a		22b				
23	E6F 124	Chain pin A	1	23a		23b		23c		
24	E6F 125	Chain pin B	1	24a				24b		
25	E6F 126	Suspension plate	1	25a				25b		
26	E6F 857	Socket bolt	1	26a		26b				
27	E6F 152	Machine screw with spring washer	4				P2-35a			
28	E6F 123	Cover	1				28a			
29	E6F 154	Socket bolt	1			29a				
30	E6F1036	Stopper L assembly	1							30a
31	E6F 156	Socket bolt	2							P2-38a
32	E6F 155	Spring washer	2							P2-37a
33	E6F 036	Stopper L	2							33a
34	E6F 037	Stopper cover	1							34a
35	E6F 841	Load chain	1	35a		35b		35c		35d

D HOOK PARTS



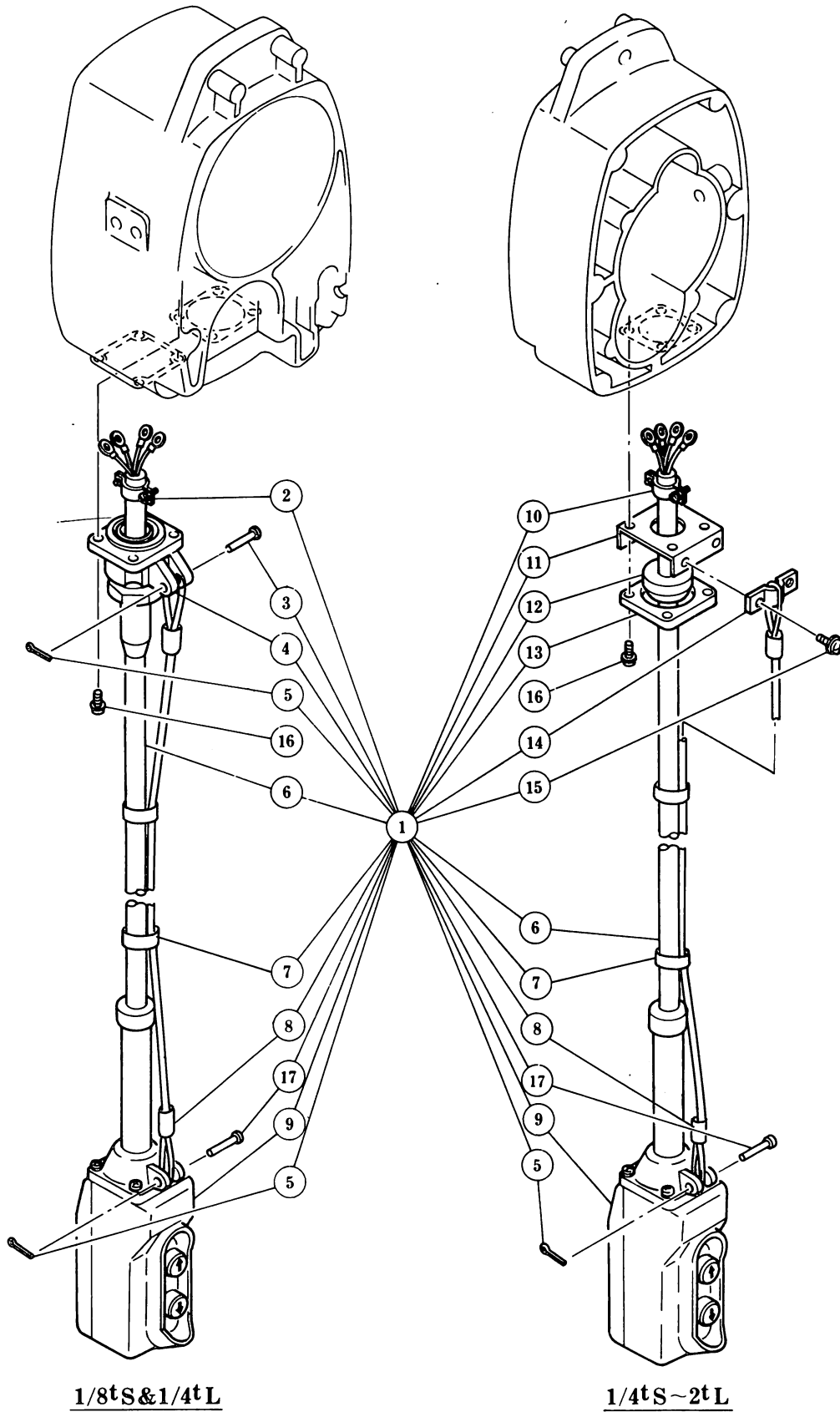
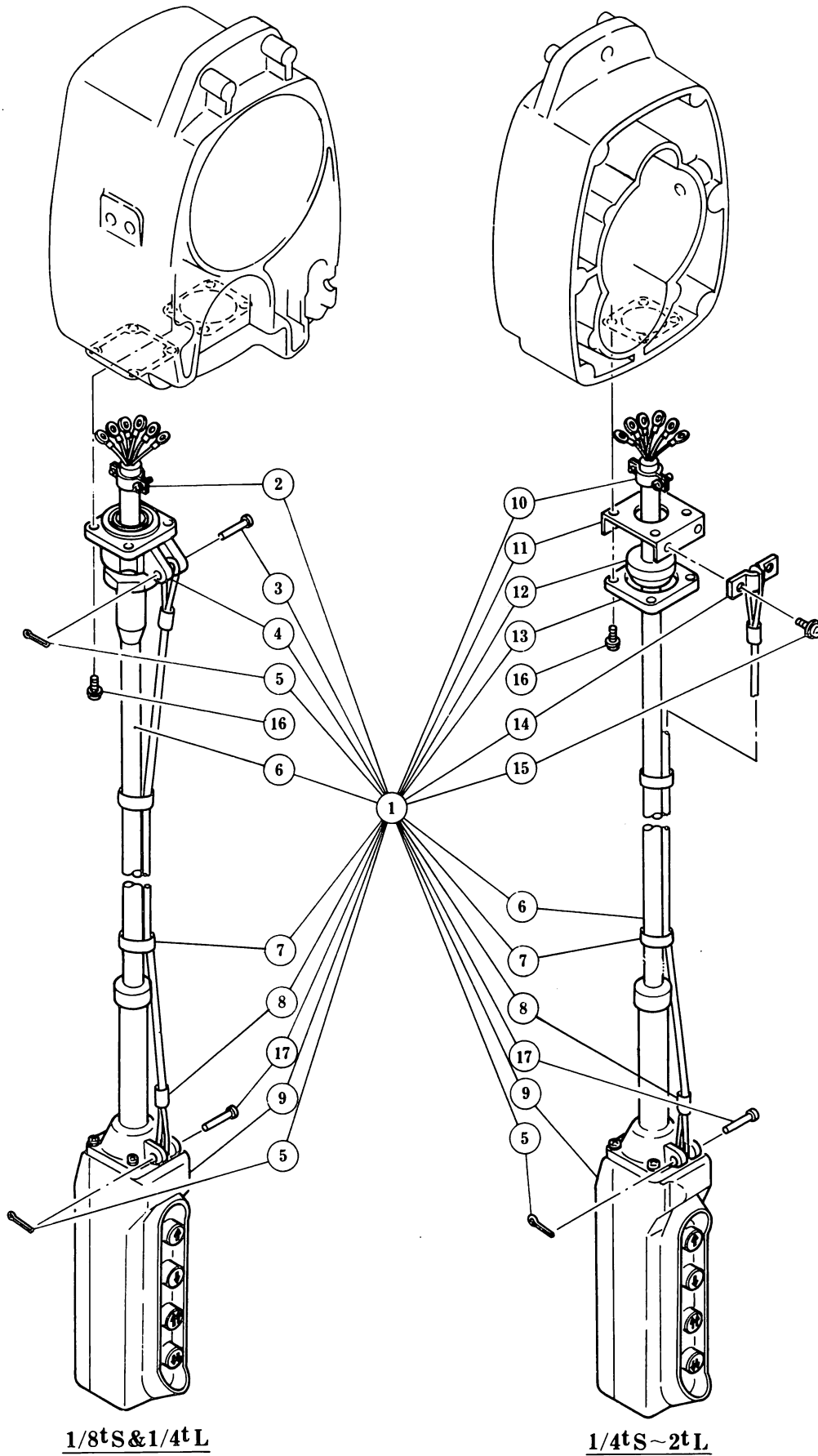


Fig No.	Part No.	Part Name	Parts Per Hoist	Capacity									
				1/8-S	1/4-L	1/4-S	1/2-L	1/2-S	1-L	1-S	2-L		
1	E6F1607S	2 Push button cord complete set	1	1 a		1 b							
2	E6F1520	Cable clamp 12 assembly	1	2 a									
3	E6F 628	Cord chain pin	1	3 a									
4	E6F1704	Cord holder A assembly	1	4 a									
5	E6F 671	Split pin	1			P6-16a							
			2	P6-16a									
6	E6F 607S	Push button cord 4C	1	6 a		6 b							
7	E3S637	Lock-belt	2	7 a									
8	E3S638	Fixing sleeve	2	8 a									
9	E6F1615S	2 Push button switch assembly	1	9 a		9 b							
10	E6F1524	Cable clamp 14 assembly	1			10a							
11	E6F 613	Holder plate U	1			11a							
12	E6F 523	Packing 14	1			12a							
13	E6F 522	Cable holder 42	1			13a							
14	E6F 614	Cord chain stopper	1			14a							
15	E6F 152	Machine screw with spring washer	2			15a							
17	E6F 638	Cord chain pin	1	17a									
16	E6F 551	Machine screw with spring washer	4	16a									



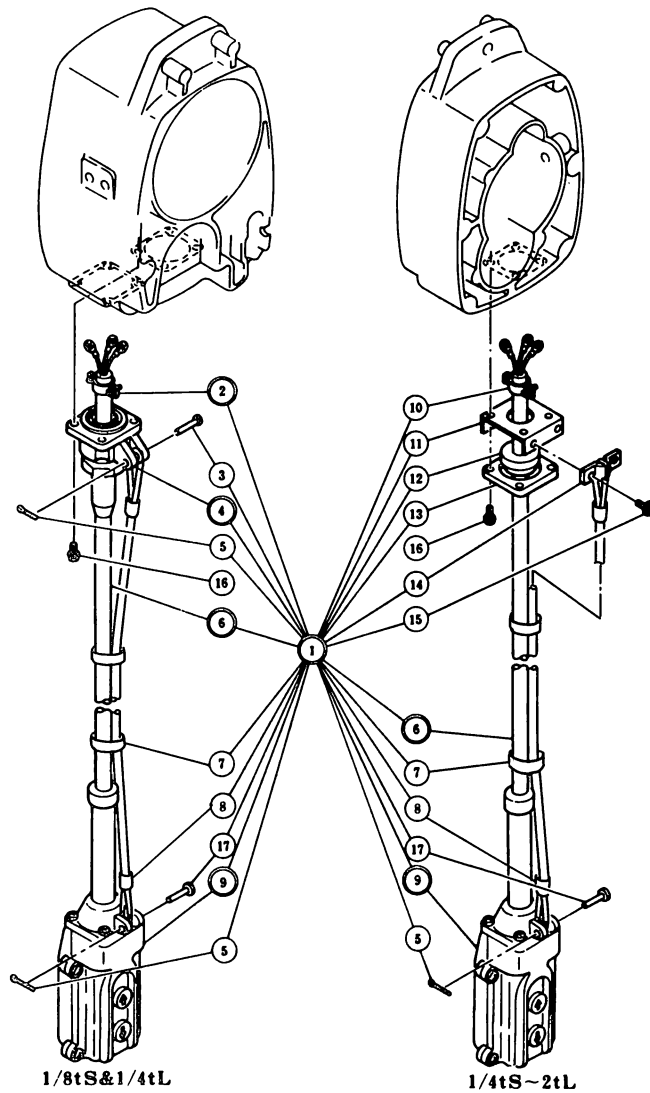


Fig No.	Part No.	Part Name	Parts Per Hoist	Capacity								
				1/8-S	1/4-L	1/4-S	1/2-L	1/2-S	1-L	1-S	2-L	
1	E6FL1607S	2 Push button cord complete set	1	1 a		1 b						
2	E6FL1612	Cable clamp 12 assembly	1	2 a								
3	E6F628	Cord chain pin	1	P10-3 a								
4	E6FL1610	Cord holder A assembly	1	4 a								
5	E6F671	Split pin	1			P 6 -16a						
			2	P 6 -16a								
6	E6FL607S	Push button cord 3C	1	6 a		6 b						
7	E3S637	Lock-belt	2	P10-7 a								
8	E3S638	Fixing sleeve	2	P10-8 a								
9	ES1615S	2 Push button switch assembly	1	9 a								
10	E6F1524	Cable clamp 14 assembly	1			P10-10a						
11	E6F613	Holder plate U	1			P10-11a						
12	E6F523	Packing 12	1			12a						
13	E6F522	Cable holder 42	1			P10-13a						
14	E6F614	Cord chain stopper	1			P10-14a						
15	E6F152	Machine screw with spring washer	2			P10-15a						
17	E6F638	Cord chain pin	1	P10-17a								
16	E6F551	Machine screw with spring washer	4	P10-16a								

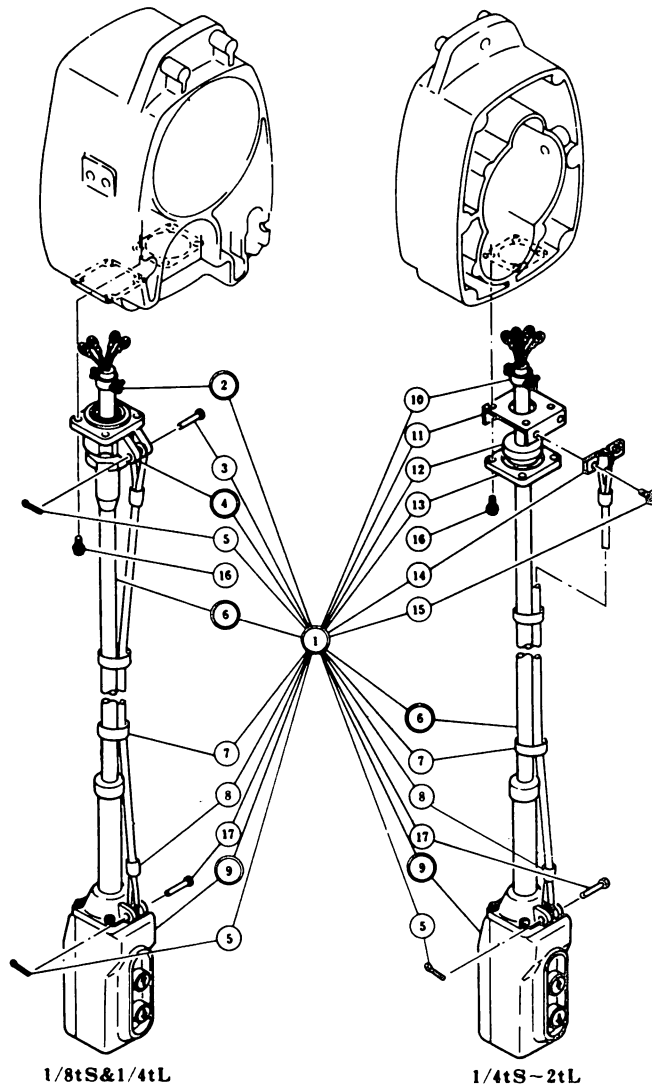
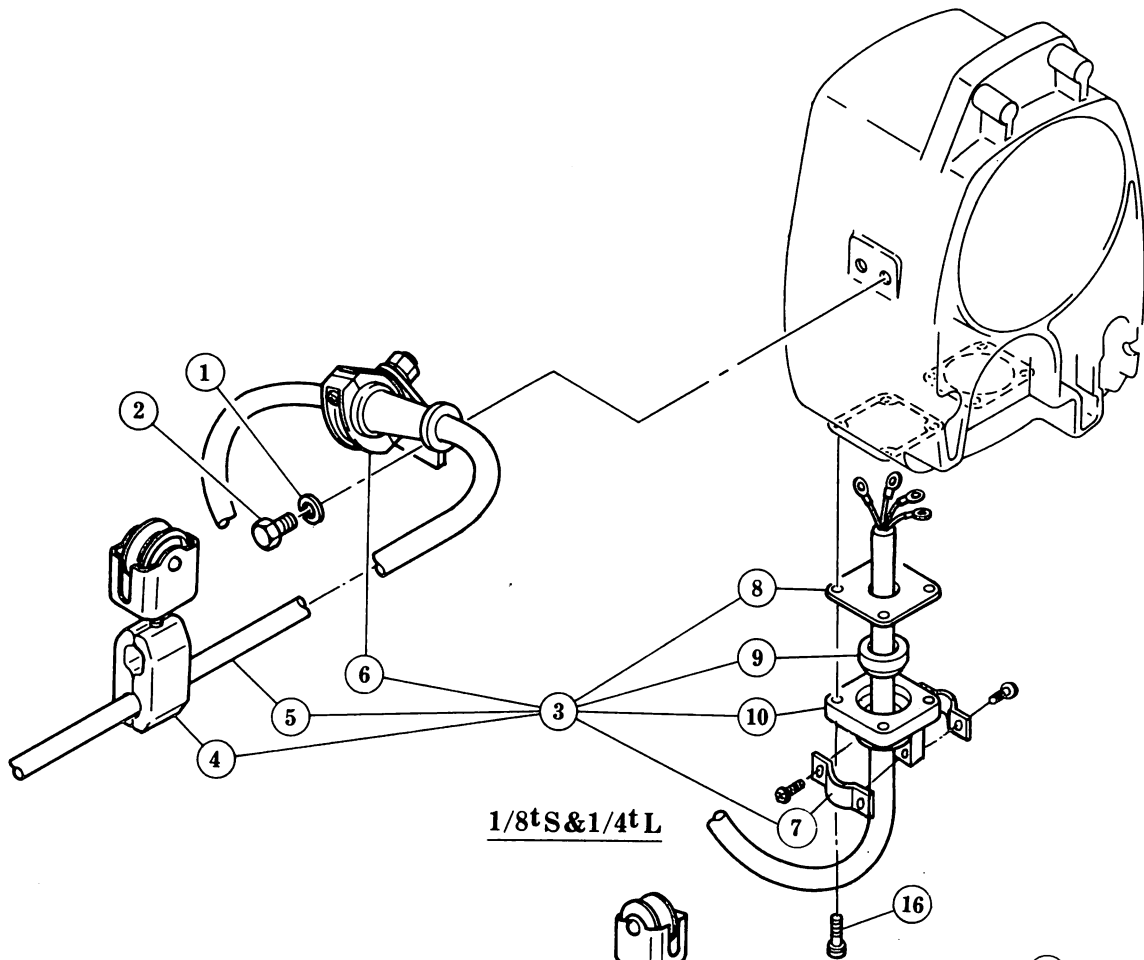
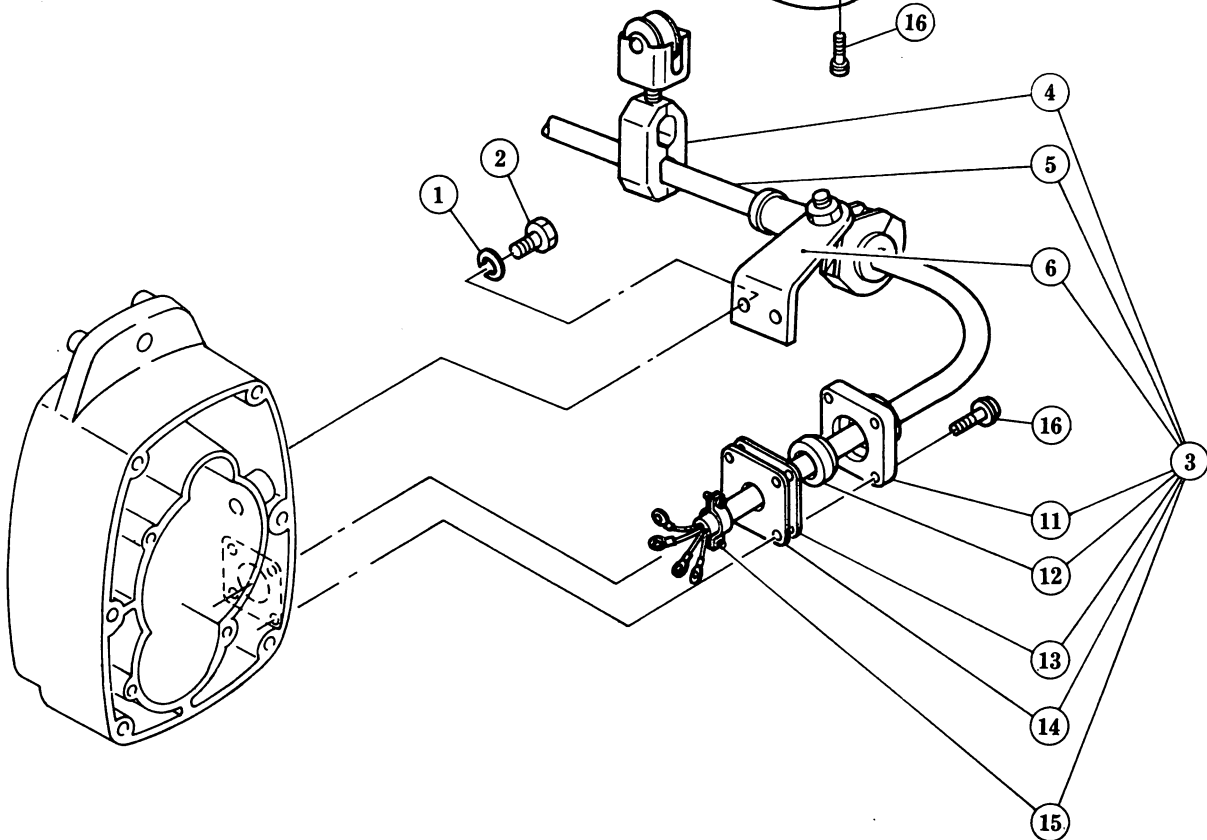


Fig No.	Part No.	Part Name	Parts Per Hoist	Capacity									
				1/8-S	1/4-L	1/4-S	1/2-L	1/2-S	1-L	1-S	2-L		
1	E6FL1607D	2 Push button cord complete set	1	1 a		1 b							
2	E6FL1612	Cable clamp 12 assembly	1	P13-2 a									
3	E6F628	Cord chain pin	1	P10-3 a									
4	E6FL1610	Cord holder A assembly	1	P13-4 a									
5	E6F671	Split pin	1			P 6-16a							
			2	P 6-16a									
6	E6FL607D	Push button cord 4C	1	6 a		6 b							
7	E3S637	Lock-belt	2	P10-7 a									
8	E3S638	Fixing sleeve	2	P10-8 a									
9	ES1615D	2 Push button switch assembly	1	9 a									
10	E6F1524	Cable clamp 14 assembly	1			P10-10a							
11	E6F613	Holder plate U	1			P10-11a							
12	E6F523	Packing 12	1			P13-12a							
13	E6F522	Cable holder 42	1			P10-13a							
14	E6F614	Cord chain stopper	1			P10-14a							
15	E6F152	Machine screw with spring washer	2			P10-15a							
17	E6F638	Cord chain pin	1	P10-17a									
16	E6F551	Machine screw with spring washer	4	P10-16a									

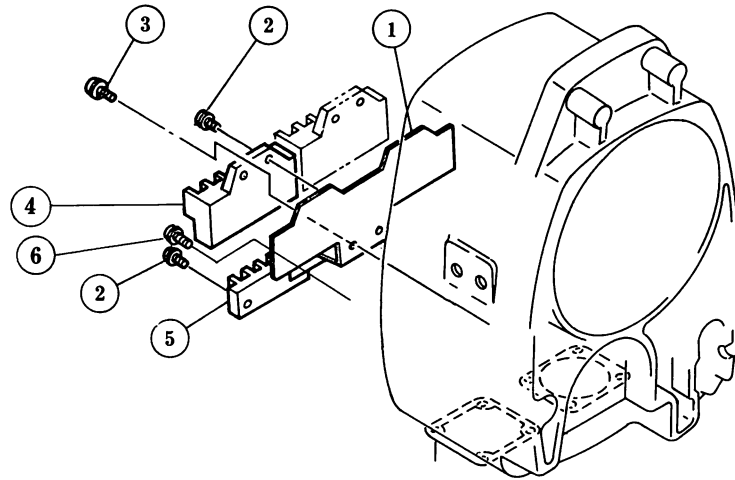
F POWER SUPPLY PARTS



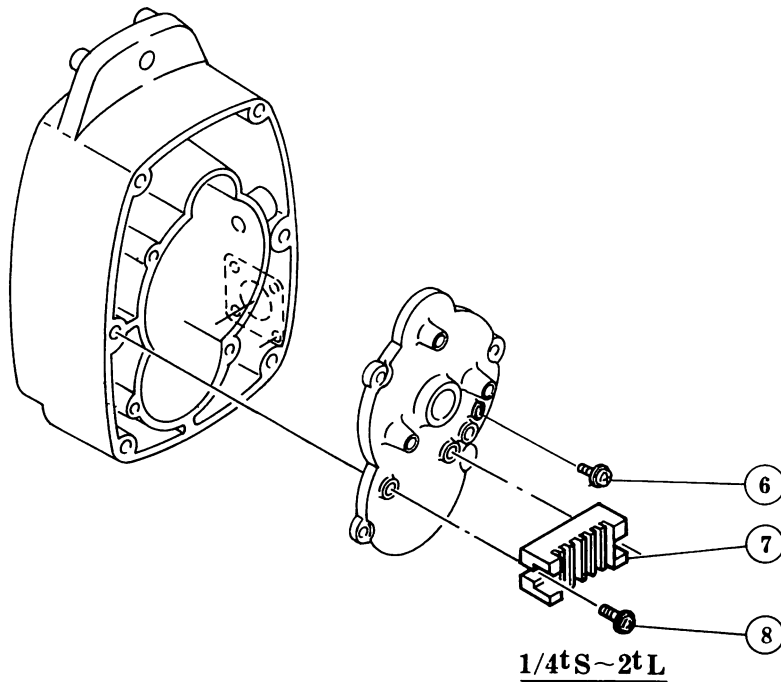
1/8tS&1/4tL



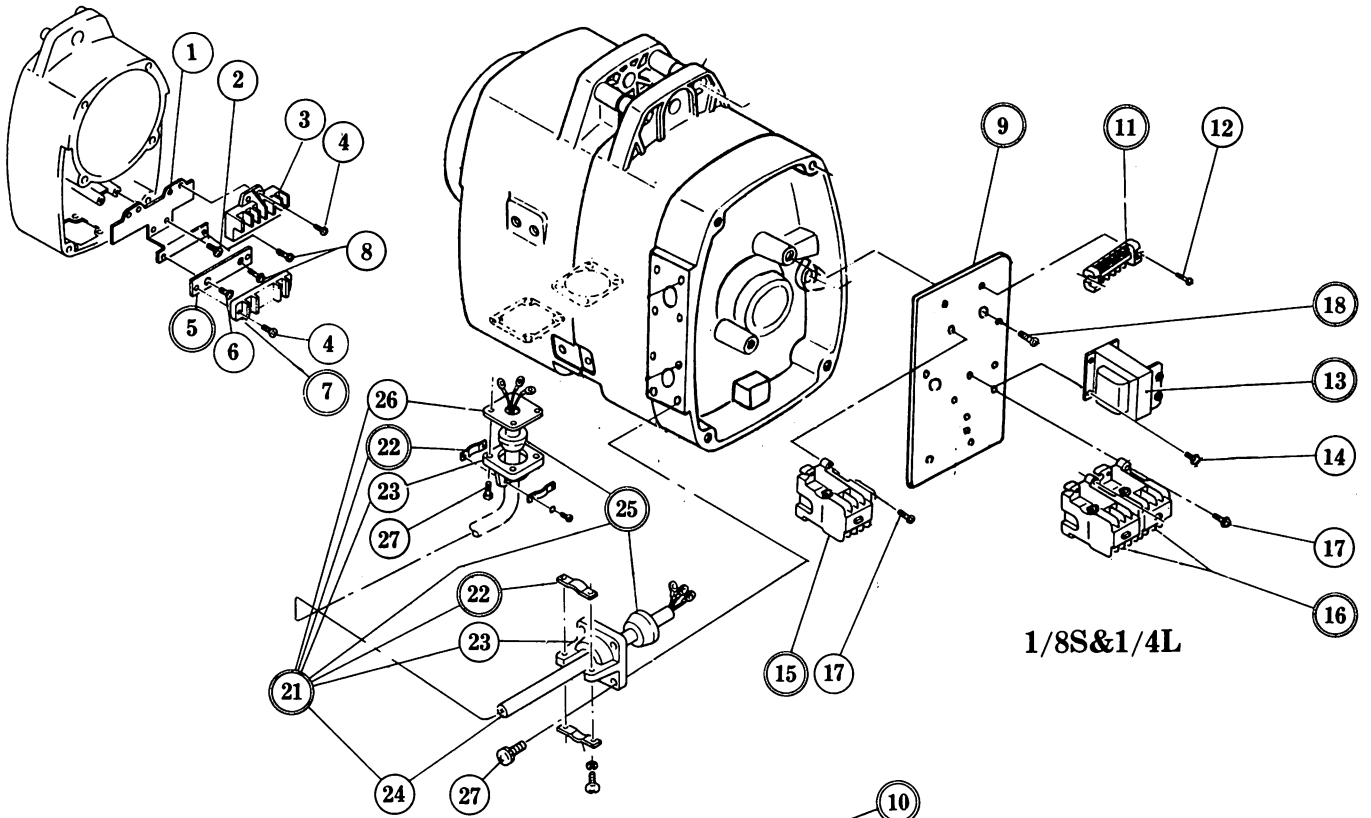
1/4tS~2tL



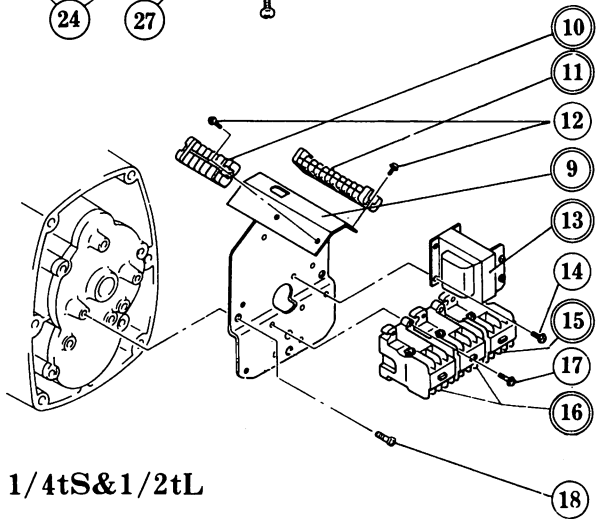
1/8tS&1/4tL



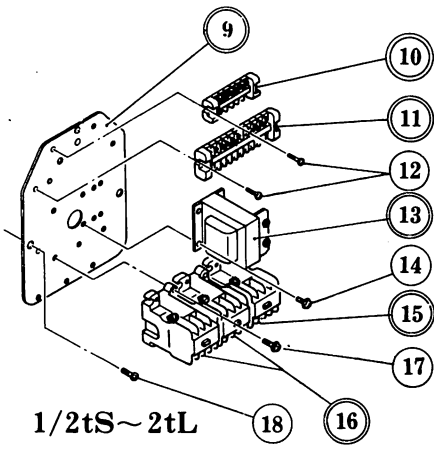
1/4tS~2tL



1/8S&1/4L



1/4tS&1/2tL



1/2tS~2tL

Fig No.	Part No.	Part Name	Parts Per Hoist		Capacity							
					1/8-S	1/4-L	1/4-S	1/2-L	1/2-S	1-L	1-S	2-L
1	E6F 513	Volt-changer Base plate	1		P18-1a							
2	E6F 151	Machine screw with spring washer	2		P2-14a							
3	E6F 606	Volt-changer	S	1	P18-4a							
			D	2								
4	E6F 652	Machine screw with spring washer	S	4	P18-8a							
			D	6								
5	E6FL 514	Terminal base plate	D	1	5a							
6	E6FL 558	Flat head machine screw	D	2	6a							
7	E6F 509	Terminal plate 3P	S	1	P18-5a							
	E6FL 603	Terminal plate 6P	D	1	7a							
8	E6FL 663	Machine screw with spring washer	1		P18-6a							
*2 9	E6FL5601	Panel assembly	1		9a*2							
	E6FL 601	Panel			9b*2			9c*2		9d*1		
10	M6F 518	Terminal plate 6P	D	1	10a							
11	E6FL 605	Terminal plate 4P	1		11a							
	E6FL 604	Terminal plate 9P(220/380V)			11b							
		Terminal plate 11P(220/440V)			11c							
12	E6F 652	Machine screw with spring washer	S	2	P18-8a							
			D	4*1								
13	MS 546	Transformer	S	1	13a						13b*2	
			D	1								
14	E6FL 663	Machine screw with spring washer	4		P18-6a							
15	ES 618	Electromagnetic contactor	D	1	15a						15b	
16*2	ES 617	Electromagnetic contactor	2		16a						16b	
17	E6F 652	Machine screw with spring washer	S	4	P18-8a							
			D	6								
18	E6F 152	Machine screw with spring washer	3		P2-35a							
	E6FL 651	Machine screw with spring washer	2		18a							
21	E6FL1537S	Cable 8C complete set	S	1	21a							
	E6FL1537D	Cable 10C complete set	D	1	21b							
22	E6FL1540	Cable clamp 18 assembly	S	2	22a							
		Cable clamp 21 assembly	D	2	22b							
23	E6FL 538	Cable holder M	2		P16-10a							
24	E6FL537S	Cable 8c	S	1	24a							
	E6FL537D	Cable 10c	D	1	24b							
25	E6FL 539	Cable packing 18	S	2	25a							
		Cable packing 21	D	2	25b							
26	E6F 541	Holder plate B	1		P16-8a							
27	E6F 551	Machine screw with spring washer	8		P10-16a							

*1 1/8-S, 1/4-L:two pieces required.

*2 Care should be taken that these parts have no interchangeability, with the models older than EF2r

KITO

URL. <http://www.kito.co.jp>